

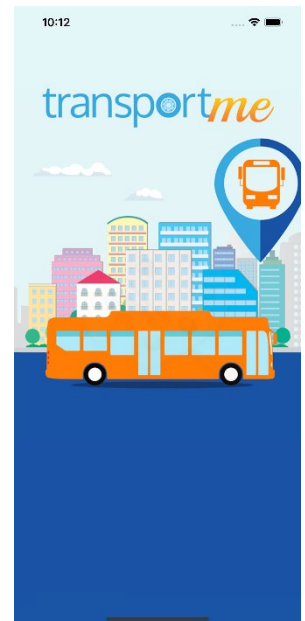
15 April 2025

Bus Tracking for Des's School bus service

Dear Families,

Please be informed that the live tracking for our bus service with Des's Transport is available now. Please follow these steps if you would like to track location of the bus.

- Open the app store on your device or scan QR code below
- Download **Transportme Passenger App**
- Open the app
- Create an account or sign in with google
- Go to **Live Tracking**
- Select the search function
- Type **Des Transport**
- Select the **Seaview route** you want to track, there are 2 am runs and 2 pm runs.



If you are interested in using the bus service, please don't hesitate to contact the office for an information pack and application form.

Kind Regards,
Miriam Gregurke
Administration Manager