



SEAVIEW  
CHRISTIAN COLLEGE

# UNIFORM GUIDE



College Hat

Secondary Backpack

Homework Folder (R-Yr4)

Primary Backpack

GIRLS FORMAL UNIFORM		BOYS FORMAL UNIFORM		UNISEX SPORTS UNIFORM
YEAR 3 - 6	YEAR 7 - 12	YEAR 3 - 6	YEAR 7 - 12	RECEPTION - YEAR 12
<b>College Hat</b>   reversible navy blue and house colours hat with College logo print, compulsory				
<b>Homework Folder</b>   navy blue folder with College logo print, compulsory <i>Note: for Reception - Year 4 students only</i>				
<b>College Backpack</b>   navy blue backpack with College logo print, non-compulsory				
<b>Dress</b>   short-sleeved, checked blue pleated/unpleated dress with bow tie and embroidered College initials	<b>Blouse</b>   short-sleeved, light blue blouse with bow tie and embroidered College initials <b>Skirt</b>   navy blue skirt	<b>Shirt</b>   short-sleeved, light blue shirt with embroidered College initials <b>Shorts</b>   navy blue shorts <b>Pants</b>   grey trousers (winter)	<b>Shirt</b>   short-sleeved, light blue shirt with embroidered College initials <b>Shorts</b>   navy blue shorts <b>Pants</b>   grey trousers (winter)	<b>Polo Shirt</b>   short-sleeved, navy blue sports polo shirt with embroidered College initials <b>Shorts</b>   navy blue sports shorts with embroidered College initials <b>Pants</b>   navy blue track pants (winter)
<b>Socks</b>   plain white crew socks <b>Tights/Stockings</b>   navy blue (winter)		<b>Socks</b>   plain navy blue crew socks		<b>Socks</b>   plain white crew socks
<b>Shoes</b>   plain black sports sneakers (laces or velcro) <i>Shoes must be plain black sports sneakers (lace up or velcro) that are constructed of sturdy material, provide adequate support and cover the entire upper section of the foot for protection. Skate shoes (flat soles) are not acceptable. Students must wear these shoes with both their formal and sports uniforms. For sports lessons and annual athletics/sports days students are permitted to bring other specialty sports/running shoes to change into if required.</i>				
<b>Jumper</b>   navy blue v-neck jumper with embroidered College logo (winter)				<b>Jacket</b>   navy blue softshell jacket with embroidered College initials (winter) <i>Note: can be worn with formal uniform.</i>
<i>As part of enrolment at Seaview Christian College, students are required to wear the uniform items as listed on this brochure. All uniform items must be purchased through the College Uniform Shop with the exception of shoes and hair ties. A copy of the full uniform policy is available on the College website or by request from the front office. Scheduled uniform days will be communicated at the start of each school year. These days are subject to change, families will be notified if this occurs.</i>				<b>Rugby Tops</b>   navy blue rugby top with light blue and white stripes and embroidered College initials <i>Note: to be worn with sports uniform only.</i>

# OTHER UNIFORM EXPECTATIONS

## ACCESSORIES

- Allowable jewellery for girls is one pair of small, plain gold/silver sleepers or small, plain studs worn in the lower ear lobe and a small silver, gold or black wristwatch. A medic-alert neck chain or bracelet may be worn also, where this is medically required.
- Allowable jewellery for boys is a small silver, gold or black wristwatch only. A medic-alert neck chain or bracelet may be worn also, where this is medically required.
- Jewellery relating to/maintaining extra ear/body-piercing is not acceptable while attending the college.



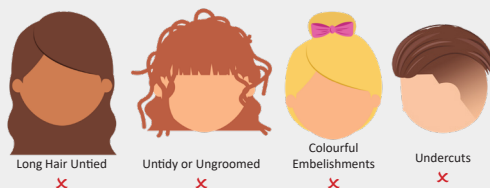
## ACCEPTABLE HAIR GUIDE

- Hairstyles are to be conservative. No extremes in style or cut are permitted. Hair should be styled in such a way as not to interfere with correct wearing of the hat.
- Girls' hair that touches the shoulder or longer in length must be tied up or braided. Short hair is to be worn away from the face. Hair ties and accessories must be either navy blue, black and/or white.
- Boys' hair is to be tidy, and of a short style no shorter than a no. 2 cut length. Hair needs to be off the ears, eyes, eyebrows and nape of the neck. Undercuts, mohawks, rats tails, mullets, razor patterns are not acceptable. Only minimal hair product is permitted.
- Boys are to be clean-shaven at all times. Sideburns are to be no lower than the bottom of the ears.
- Unnatural hair colour is not acceptable.

ACCEPTABLE Girls Hairstyles



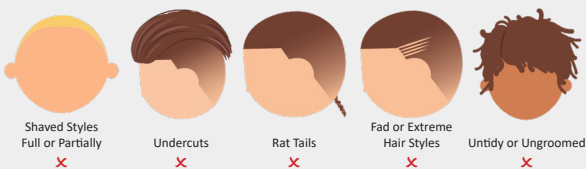
UNACCEPTABLE Girls Hairstyles



ACCEPTABLE Boys Hairstyles



UNACCEPTABLE Boys Hairstyles



## MAKE-UP / OTHER

- Make-up (concealer) only permitted in small quantities to cover blemishes.
- No fake eyelashes or eyelash extensions.
- Nail polish and/or fake nails are not permitted.
- Body tattoos are not permitted.